



## REGIONAL SPECIALISED METEOROLOGICAL CENTRE-TROPICAL CYCLONES, NEW DELHI TROPICAL WEATHER OUTLOOK

DEMS-RSMC TROPICAL CYCLONES NEW DELHI DATED 19.05.2025

**TROPICAL WEATHER OUTLOOK FOR THE NORTH INDIAN OCEAN (THE BAY OF BENGAL AND THE ARABIAN SEA) VALID FOR THE NEXT 168 HOURS ISSUED AT 0730 UTC OF 19.05.2025 BASED ON 0300 UTC OF 19.05.2025.**

### BAY OF BENGAL:

Yesterday's upper air cyclonic circulation over southwest & adjoining southeast Bay of Bengal lay over westcentral & adjoining southwest Bay of Bengal between 1.5 & 5.8 km above mean sea level, tilting southwestwards with height at 0300 UTC of today, the 19<sup>th</sup> May, 2025.

Yesterday's trough extended from southeast Bay of Bengal to north interior Karnataka across the above cyclonic circulation over westcentral & adjoining southwest Bay of Bengal and central parts of Tamil Nadu, south interior Karnataka between 1.5 & 5.8 km above mean sea level tilting southwestwards with height at 0300 UTC of today, the 19<sup>th</sup> May, 2025.

Scattered low and medium clouds with embedded intense convection lay over westcentral & southwest Bay of Bengal. Scattered low and medium clouds with embedded moderate to intense convection lay over rest Bay of Bengal, Andaman Sea & Gulf of Martaban.

#### \*PROBABILITY OF CYCLOGENESIS (FORMATION OF DEPRESSION) DURING NEXT 168 HRS:

24 HOURS	24-48 HOURS	48-72 HOURS	72-96 HOURS	96-120 HOURS	120-144 HOURS	144-168 HOURS
NIL	NIL	NIL	NIL	NIL	NIL	NIL

\*NOTE: EVERY 24HR FORECAST IS VALID UPTO 0300 UTC (0830 IST) OF NEXT DAY

### ARABIAN SEA:

Yesterday's upper air cyclonic circulation over northeast Arabian Sea off south Gujarat persisted over the same region at 1.5 km above mean sea level at 0300 UTC of today, the 19<sup>th</sup> May, 2025.

An upper air cyclonic circulation is likely to form over eastcentral Arabian Sea off Karnataka coast around 21st May. Under its influence, a Low-pressure area is likely to form over the same region around 22nd May. Thereafter, it is likely to move northwards and intensify further.

Scattered low and medium clouds with embedded intense convection lay over eastcentral & southeast Arabian Sea, Lakshadweep island area, Maldives and Comorin area.

#### \*PROBABILITY OF CYCLOGENESIS (FORMATION OF DEPRESSION) DURING NEXT 168 HRS:

24 HOURS	24-48 HOURS	48-72 HOURS	72-96 HOURS	96-120 HOURS	120-144 HOURS	144-168 HOURS
NIL	NIL	NIL	NIL	LOW	MOD	HIGH

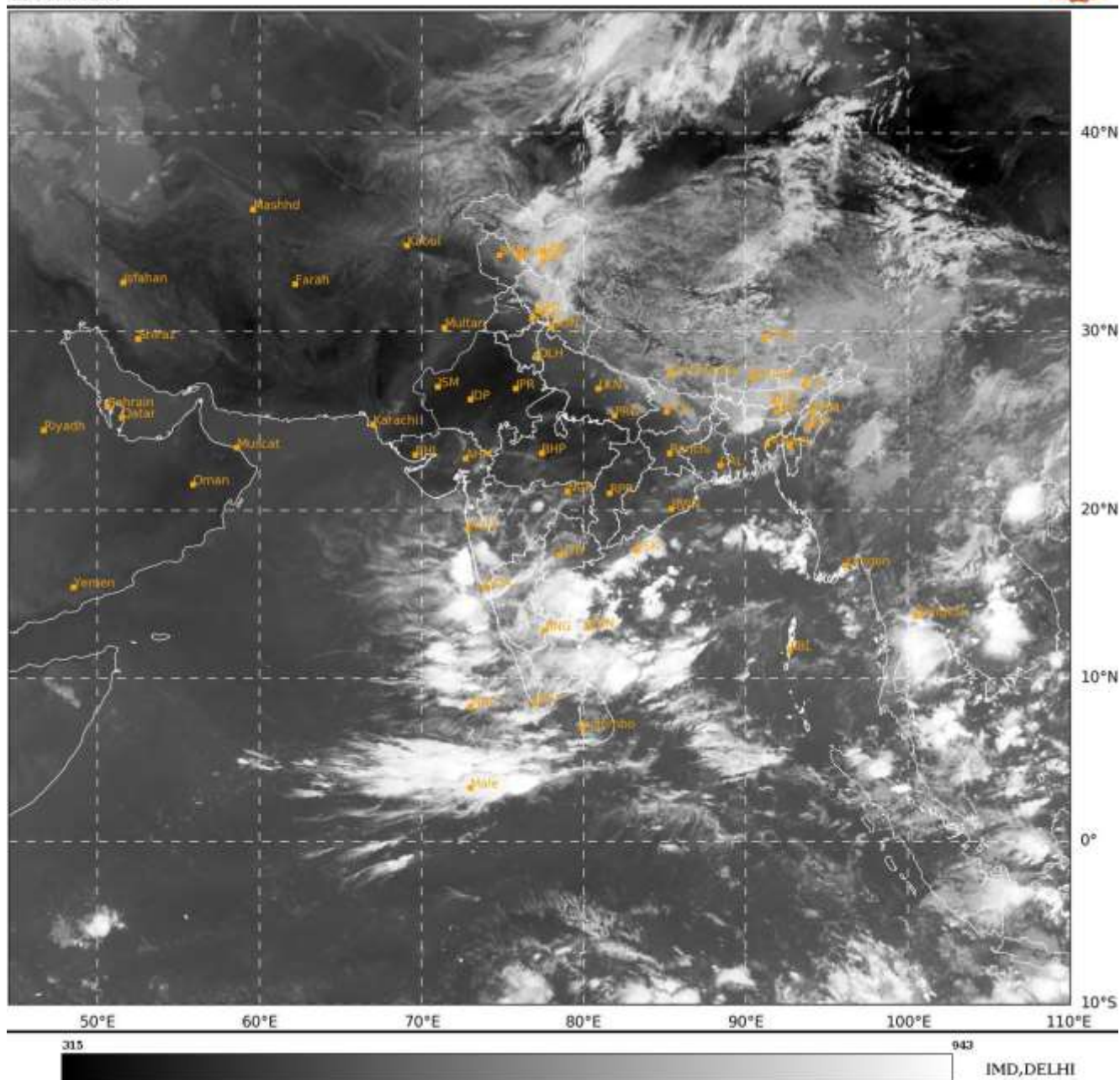
\*NOTE: EVERY 24HR FORECAST IS VALID UPTO 0300 UTC (0830 IST) OF NEXT DAY

REMARKS: NIL

Cloud distribution: (a) Isolated: <25%, Scattered:25-50%, Broken: 51-75%, Solid:>75%, Convection Intensity: (a) Weak: Cloud Top Temperature(CTT)>-25°C,(b)Moderate:CTT:-25°Cto-40°C,(c)Intense:CTT: -41°Cto -70°Cand(d)Very Intense::Less than -70°C  
PROBABILITYOFCYCLOGENESIS(FORMATIONOFDEPRESSION):NIL:0%,LOW:1-33%,MODERATE:34-66%ANDHIGH:67-100%  
ThisisaguidanceBulletinforWMO/ESCAPPanelMembercountries.VisitrespectiveNationalwebsitesforCountryspecificBulletins

SAT : INSAT-3DR IMG  
 IMG\_TIR1 10.8 um  
 LIC Mercator

19-05-2025/(0345 to 0412) GMT  
 19-05-2025/(0915 to 0942) IST



Cloud distribution: (a) Isolated: <25%, Scattered:25-50%, Broken: 51-75%, Solid:>75%, Convection Intensity: (a) Weak: Cloud Top Temperature(CTT)>-25°C,(b)Moderate:CTT:-25°Cto-40°C,(c)Intense:CTT: -41°Cto -70°Cand(d)Very Intense::Less than -70°C  
 PROBABILITYOFCYCLOGENESIS(FORMATIONOFDEPRESSION):NIL:0%,LOW:1-33%,MODERATE:34-66%ANDHIGH:67-100%  
 ThisisaguidanceBulletinforWMO/ESCAPPanelMembercountries.VisitrespectiveNationalwebsitesforCountryspecificBulletins